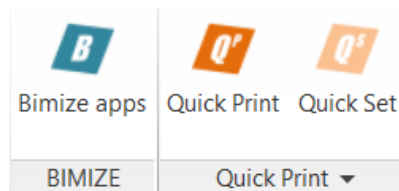


Bimize® QuickPrint – Reference



Welcome to the Bimize QuickPrint reference manual. Here you will find the basics to start using your new app. You will find your new app within the Bimize tab in the Revit ribbon. QuickPrint has two basic functions: Print and Set.

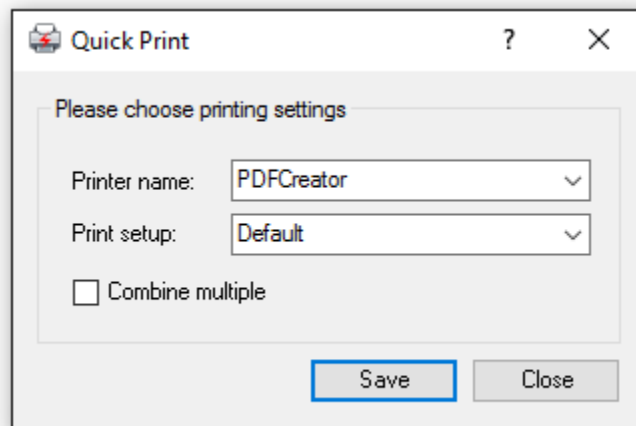


I. Print



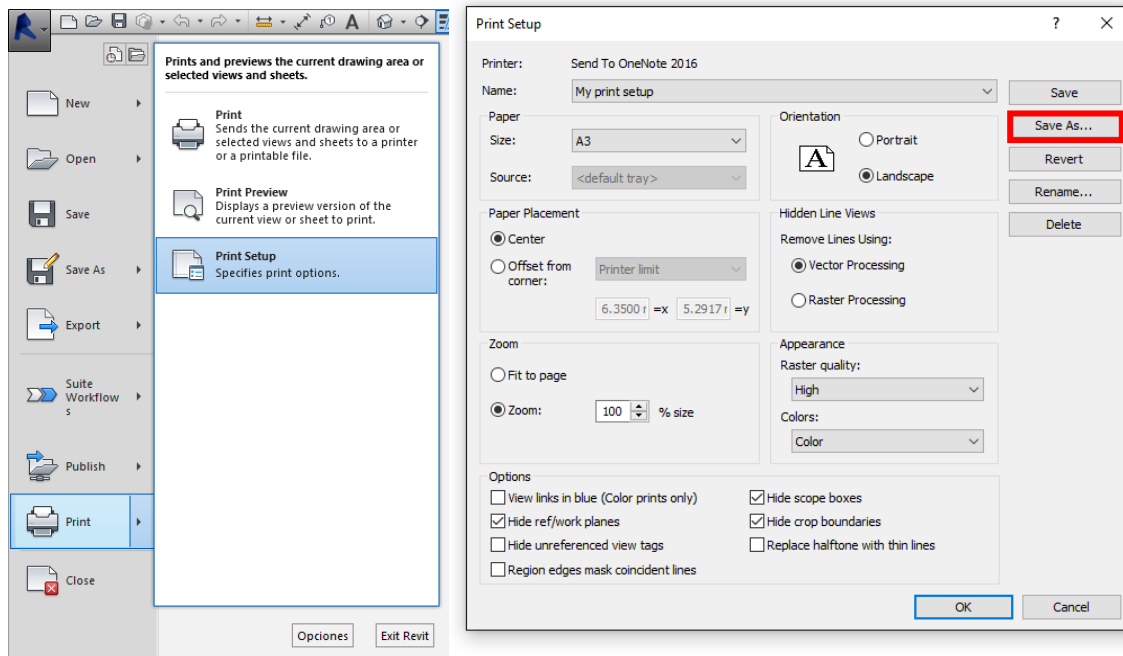
Configuring QuickPrint

Click on QuickPrint button to start printing. If this is the first time you use the app, you will be prompted to select a default printer and a default print setup.



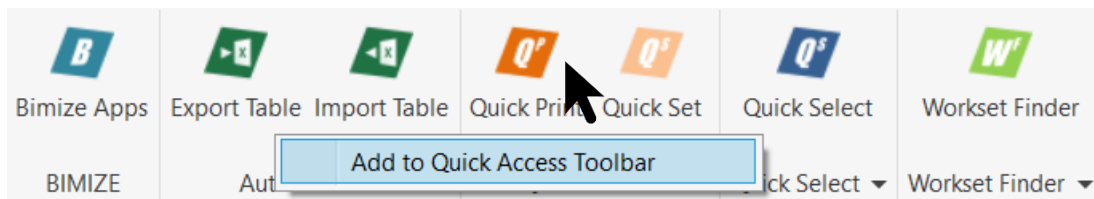
- First select the printer you wish to use as default every time you want to print among your installed printers in your computer
- Now select your desired print setup to be used for the default printer. If you don't have a print setup saved yet, please proceed to the next step.

Saving a Print Setup in Revit:



We highly recommend to create a Quick Access Toolbar shortcut:

- Right-click on Quick Print button and then Add to Quick Access Toolbar
- Do this again with Quick Set




- The result is that you will have a quick access to the printer on top:

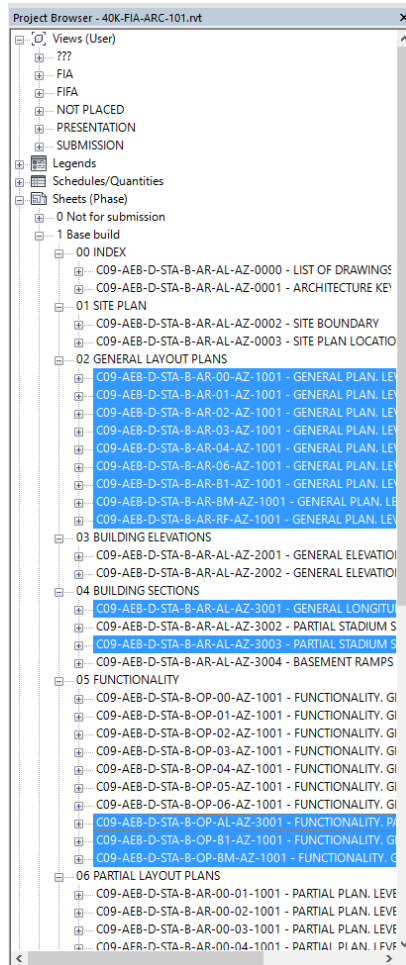


Now you have your app ready to print whenever you need so!

Printing

QuickPrint can easily print any views / sheets / schedules. There are two printing options:

- a) Just click on the QuickPrint button  or  and you will print the **active window** in Revit.
- b) First select any group of views / sheets / schedules in the project browser



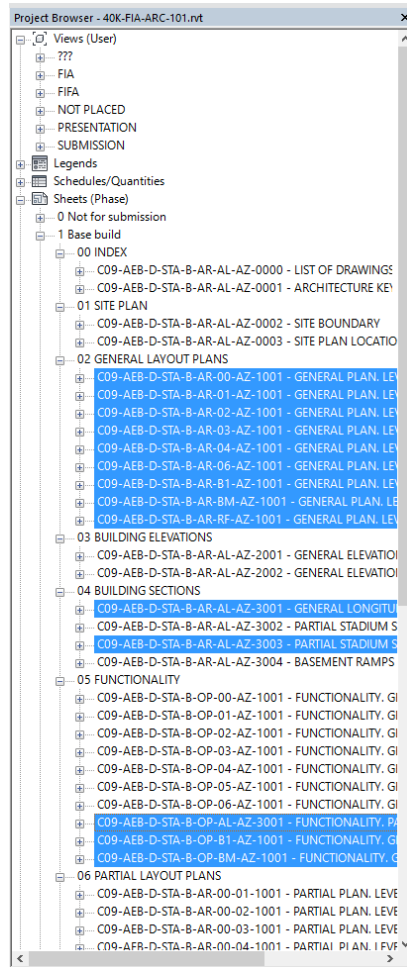
and then click on the QuickPrint button  or 

II. Print set



Creating a print set has never been so easy. To proceed:

First select any group of views / sheets / schedules in the project browser

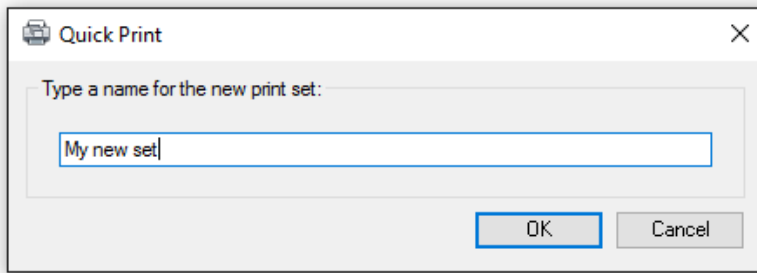


and then click on the QuickSet button

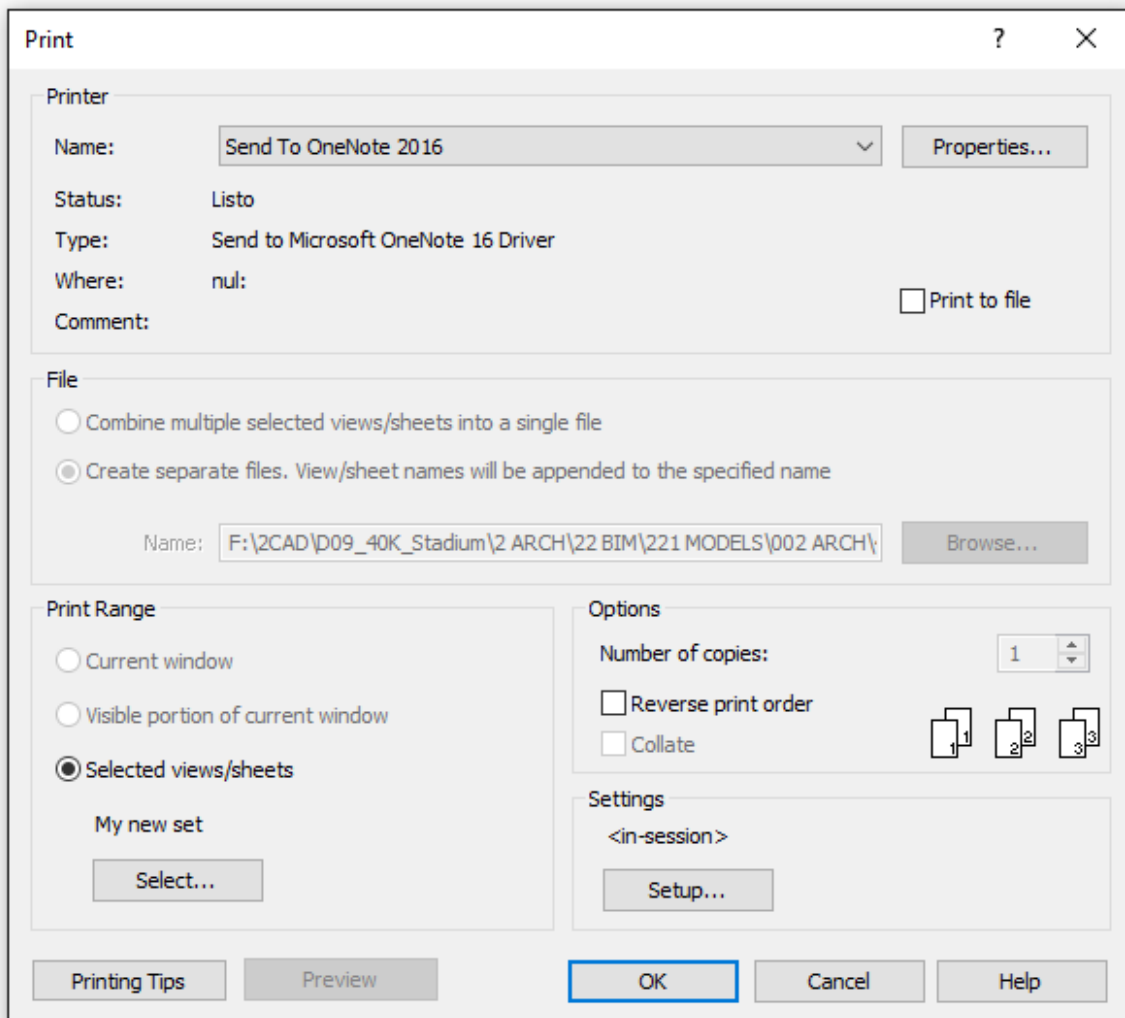


or 

Now select a new name for your printing set:



You can always retrieve your new set at the Revit print dialog. Your print set will be selected by default:



This is especially useful when you have to create large sets with long names in seconds.